



PUBLIC SECTOR
SUMMIT ONLINE

Using analytics to transform public transport

James Kwong
Head of Product
Unleash live

Agenda

Who is Unleash live?

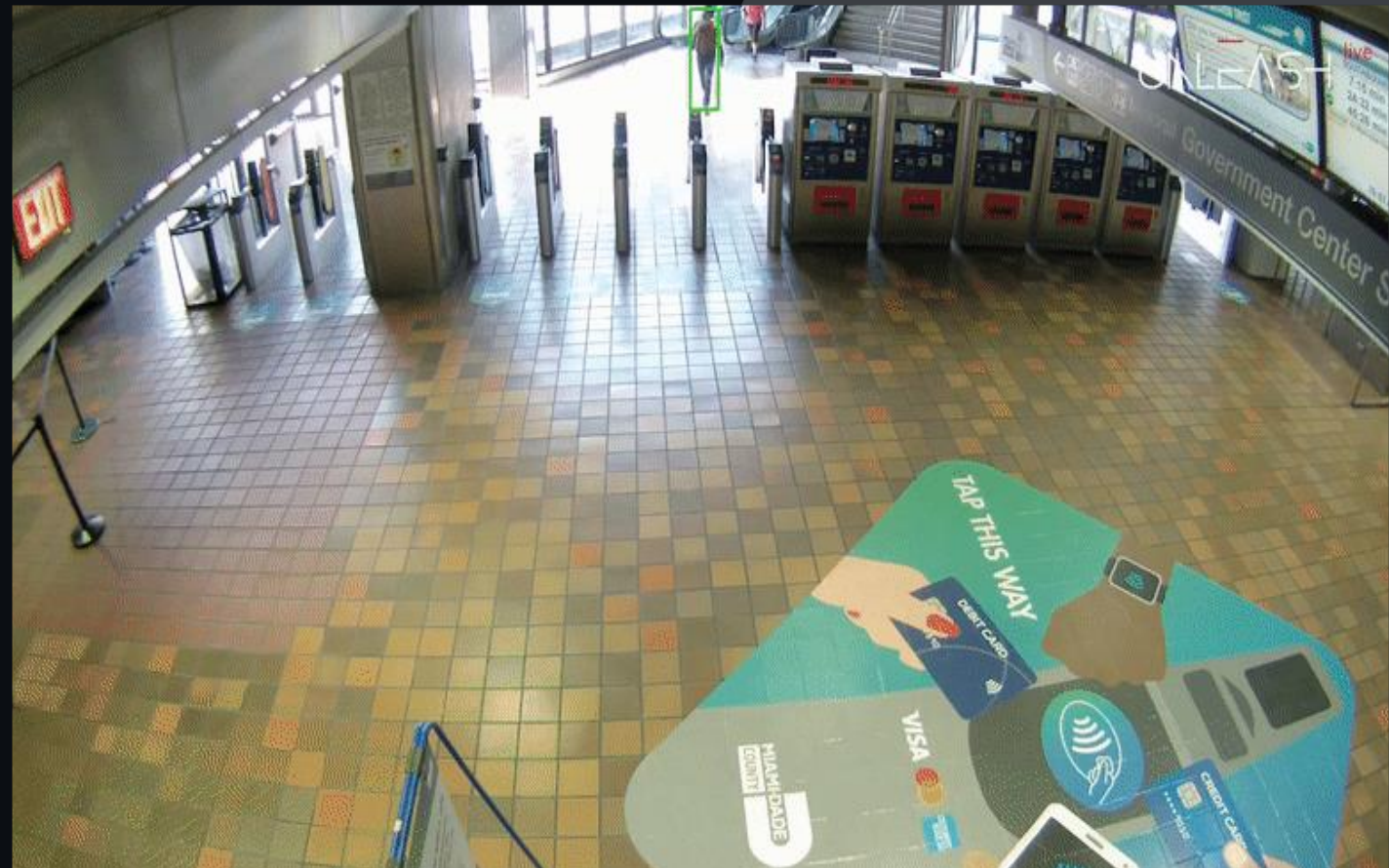
COVID-19 challenge facing Miami-Dade Metro

Video analytics with AWS

Solutions and use cases

UNLEASH ^{live}

Unleash live is an edge cloud based software platform ingesting live video and applying real time artificial intelligence (AI) analytics to improve instant decision making



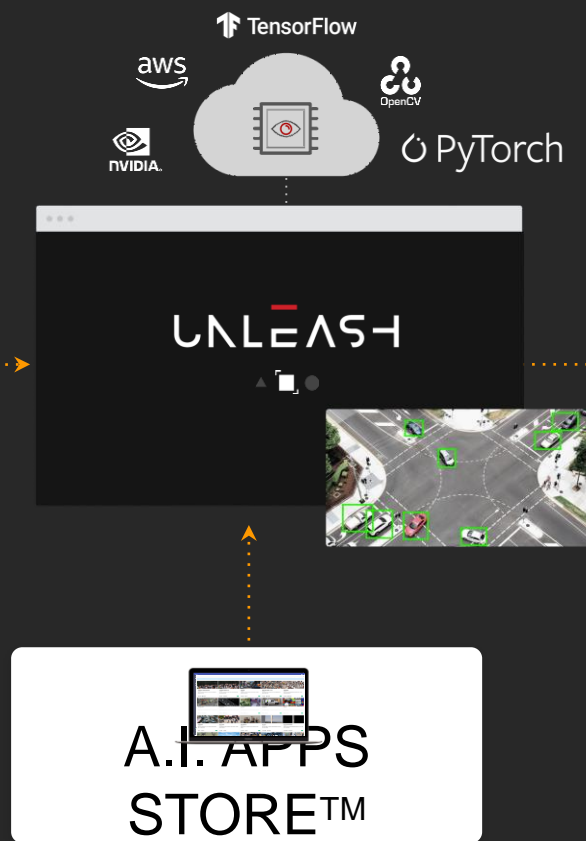
Turning video and imagery into data

Supercharging existing customer hardware and integrating into their workflows seamlessly

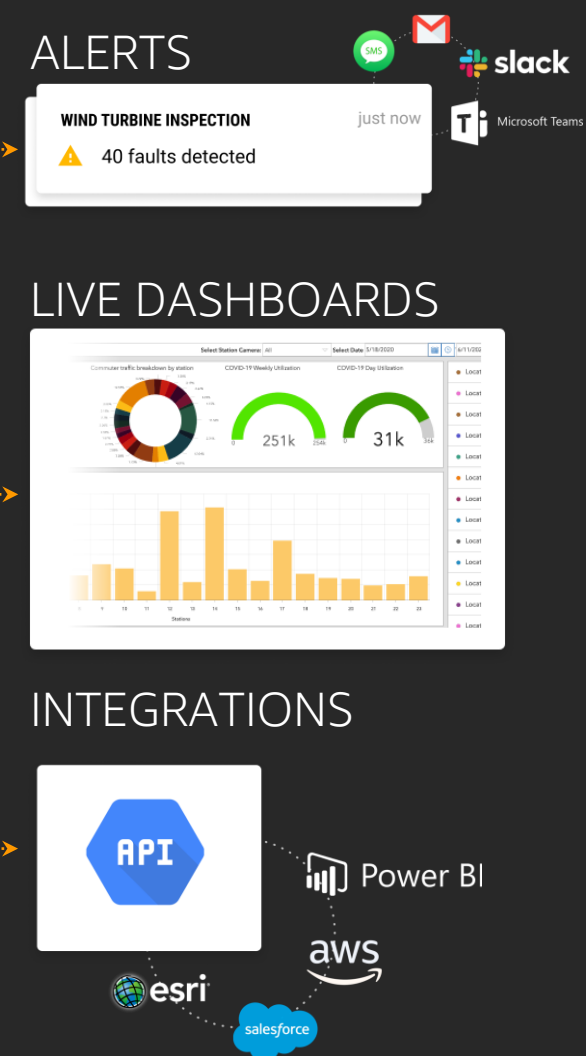
Customer Devices



Visual Analytics



Customer Workflow



UNLEASH ^{live}

Cities and transport

Unleash live integrates the output of existing camera networks, existing IoT devices, and other data sources into a browser-agnostic cloud platform. The captured data can be analyzed using dynamic AI models, visualized to provide immediate insights and exported for deeper analysis with third-party solutions. The platform enables:

Live video streaming

Automated and accurate visual data collection

Intelligent analysis and detection with AI

Automated reporting system to drive immediate insights

Notifications and alerts for faster response

Storage and archiving

- ✓ No additional capex
- ✓ Deploy within minutes
- ✓ Run tailored AI analytics
- ✓ Capture results in real time
- ✓ Connect to GIS and ERP

Saving 5-15% in city operations cost

Miami-Dade Metro

25 mile dual track servicing Miami
23 train stations
100,000+ daily commuters
500+ cameras
Avigilon VMS



Managing public transport during a pandemic

Responding to new challenges through scaled visual analytics

Reducing risk to passengers

To provide fluid, subsidized service at ticket gates, the county decided to open up ticketing gates to provide free MetroRail travel service in response to the pandemic.

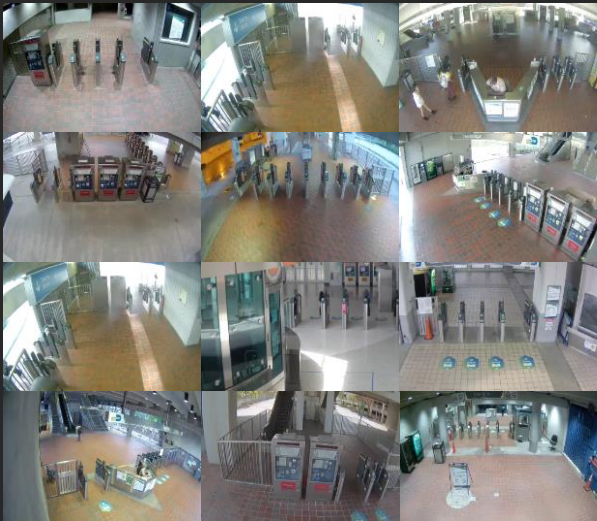
Unknown commuter volumes

Without ticket data, MetroRail provider loses the principal method of determining and tracking commuter volumes. The city is left with minimal visibility of train transit supply and demand.

Resourcing challenges

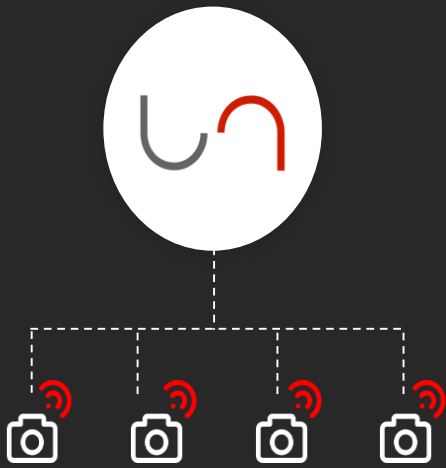
Manual counting during the pandemic is unsafe, unreliable, and unscalable across locations. Providing statistically relevant and accurate data at scale with limited manual resources is a real challenge.

Project process



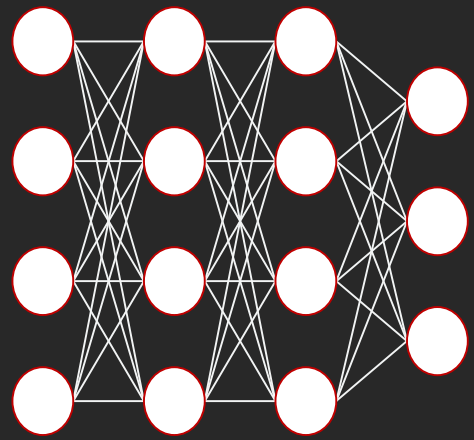
Scope Locations

Identify cameras with
view of ticket gates



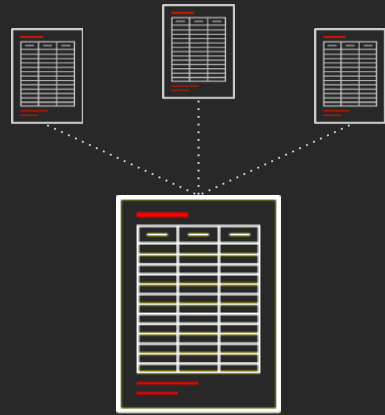
Connect Cameras

Live stream cameras
from 23 train stations
to Unleash live



Run Analysis

Train, refine, and run
anonymized people
counting and
tracking algorithm



Generate Outputs

Consolidate time
stamped entry and
exit data from all
cameras



Visualize Data

Automated data
push to Miami-Dade
transport servers

From raw video to analysis



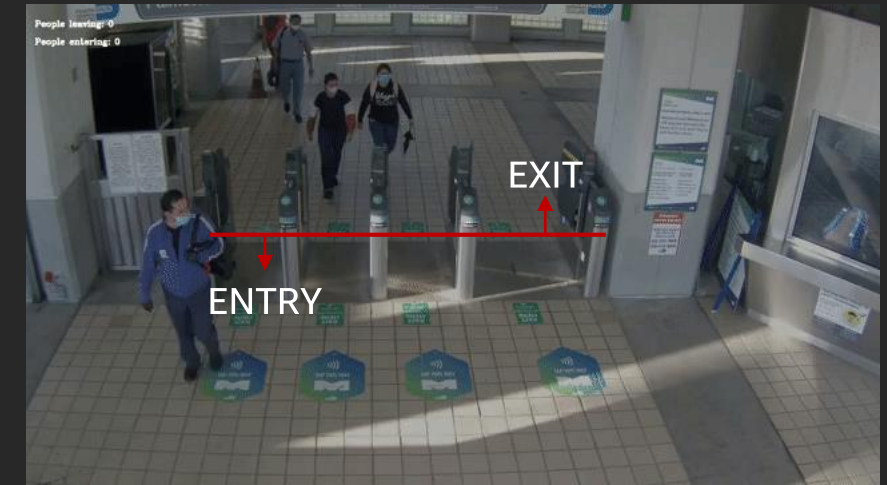
Raw Footage

Streamed footage for training and refinement



Detect People & Movement

Identify people within the scene and track their movement through gates



Gate Entry/Exit Definition

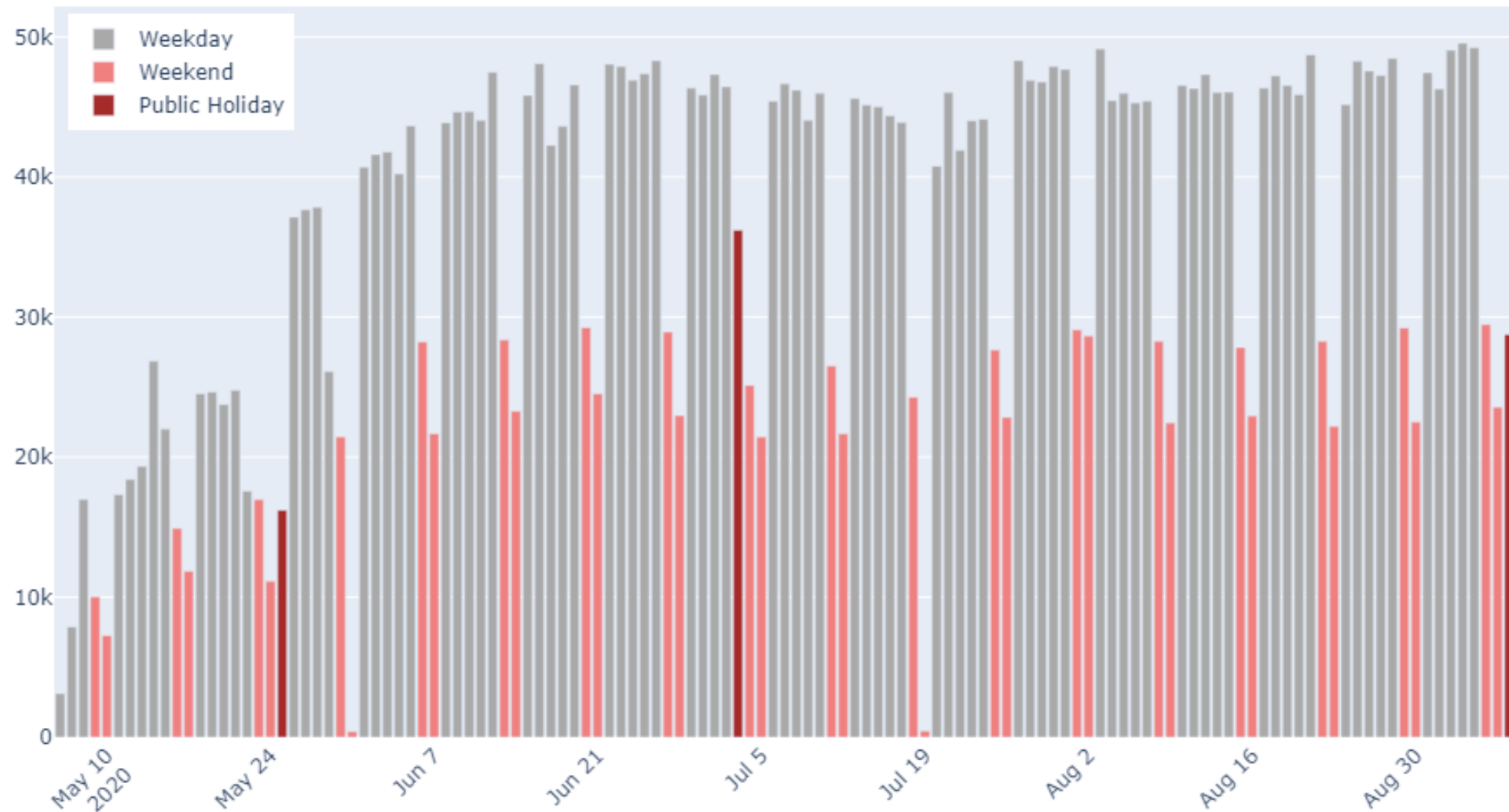
Set gate parameters to trigger entry and exit counts

Translating visual data to graphical insight

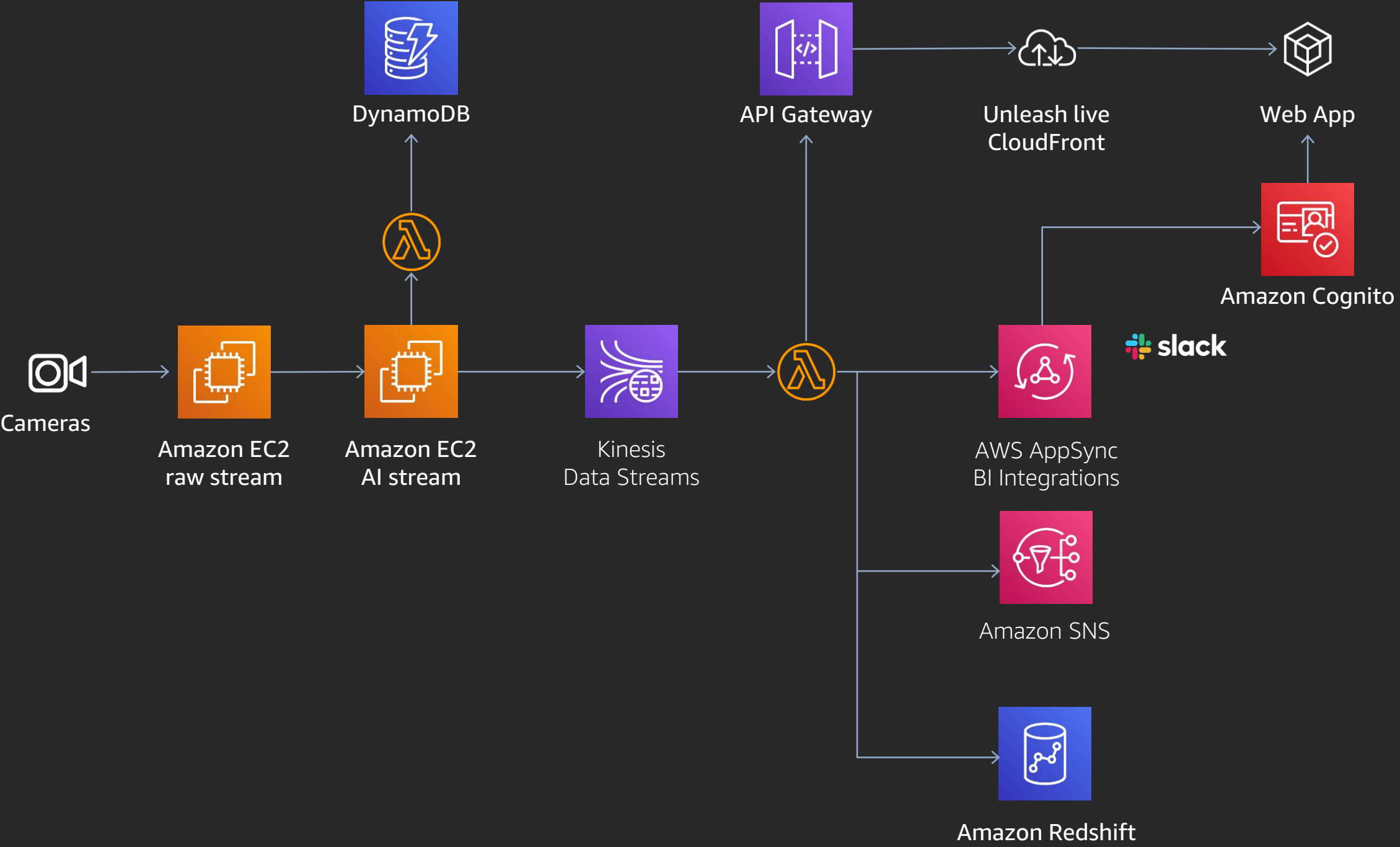


Translating visual data to graphical insight

Total Daily Counts



Running on AWS Architecture



Expanding use cases through computer vision

Extending use cases by switching on additional AI algorithms with same cameras



Real Time Tram Data

Localized real time MetroMover commuter utilization



Face Mask Detection

Anonymized face mask identification and monitoring



Social Distance Monitoring

Monitoring and automated alerts for social distance adherence

Thank you!

James Kwong

www.unleashlive.com